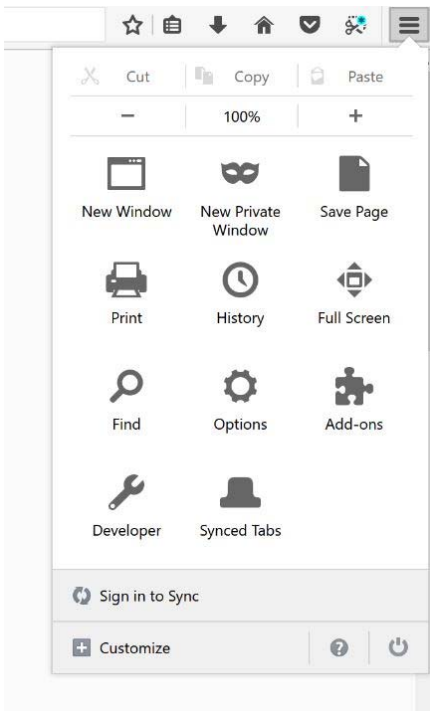


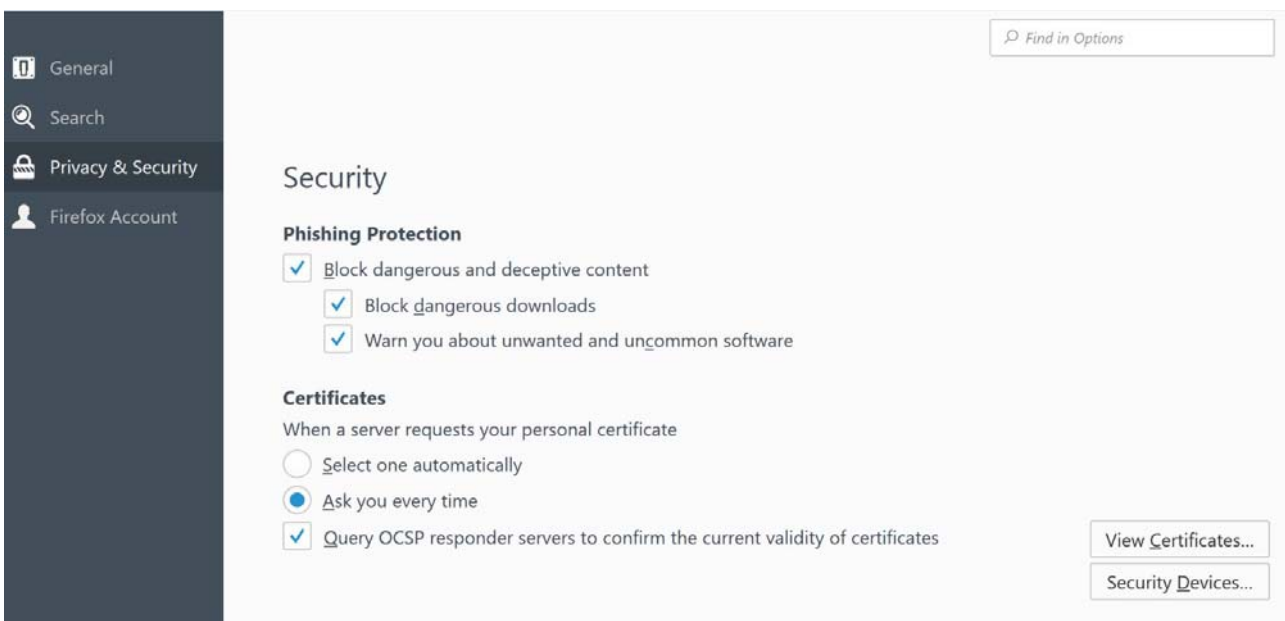
Setting up Gemalto Classic Client in Mozilla Firefox

1. Launch the Mozilla Firefox web browser.

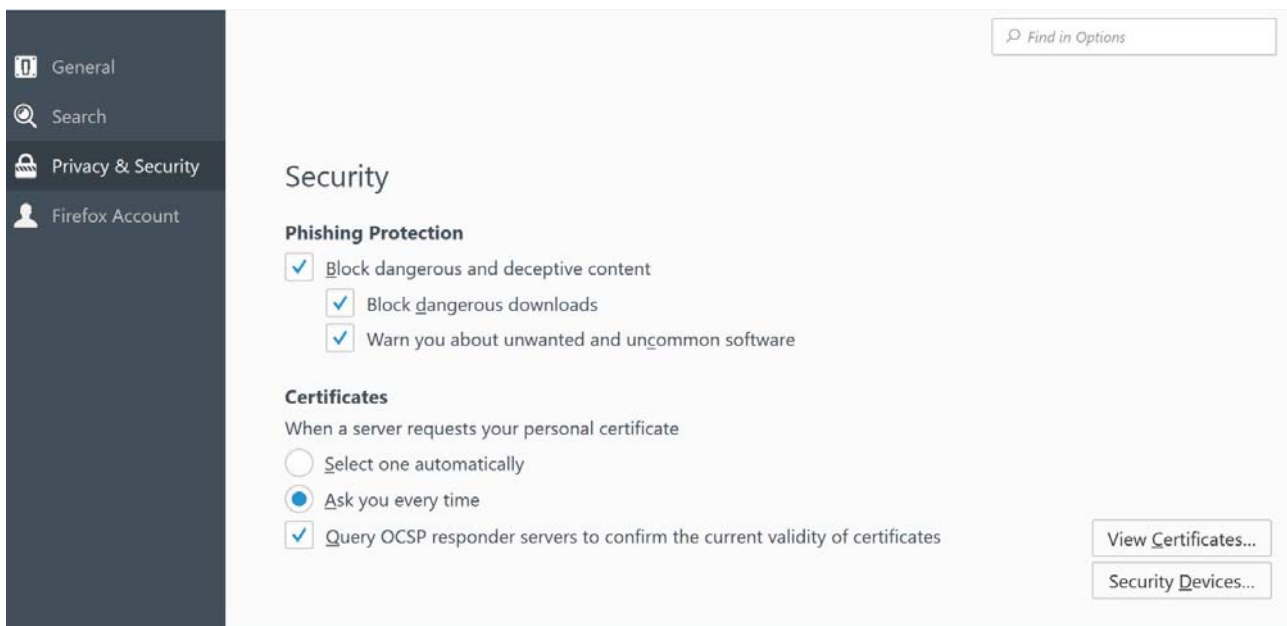
2. Click on  Open Menu => Options



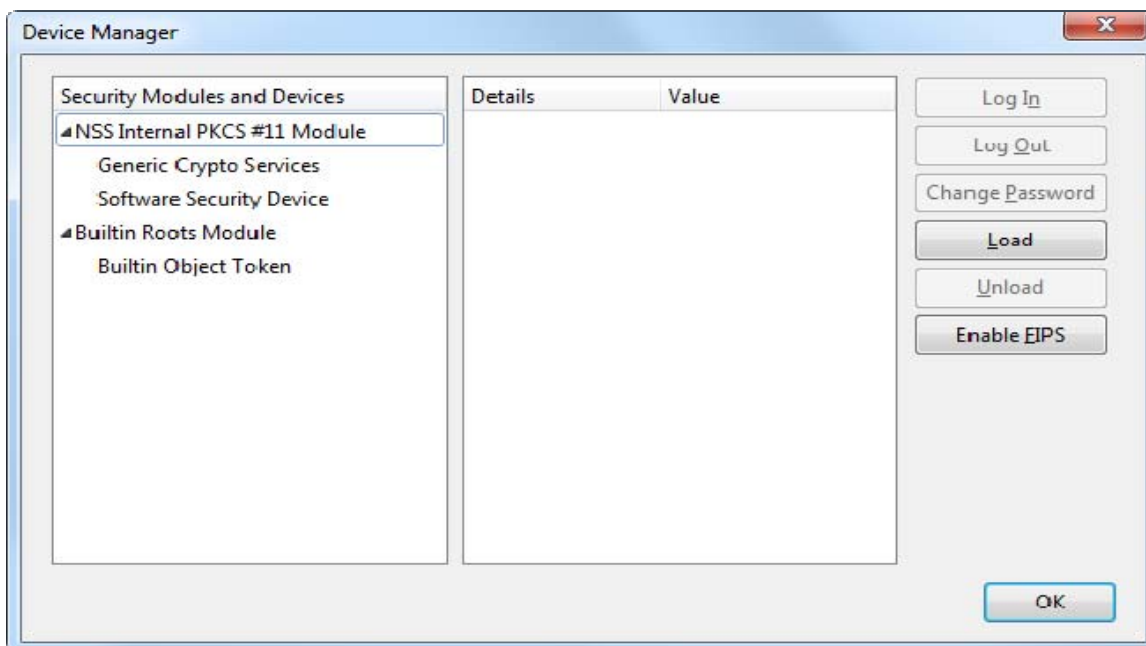
The Option window opens.



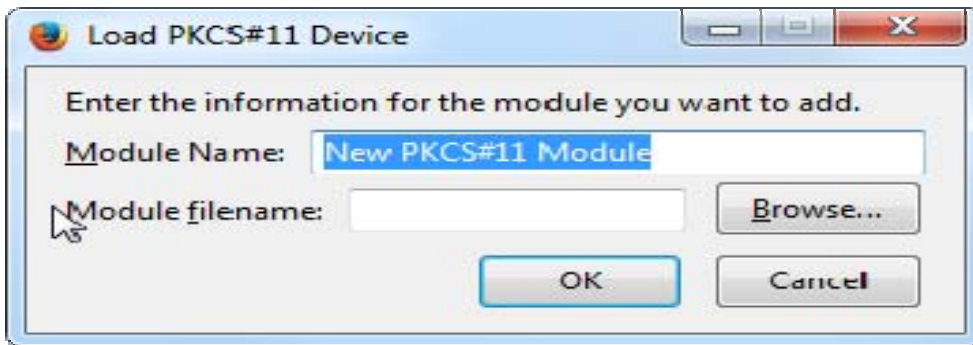
3. Click on Privacy and Security



4. Click on the Security Devices button and the window below opens

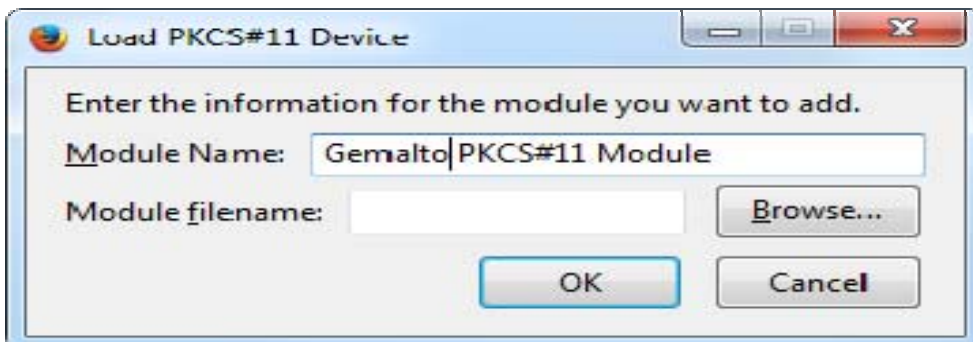


5. Click on the Load button on the right hand side of the Device Manager window



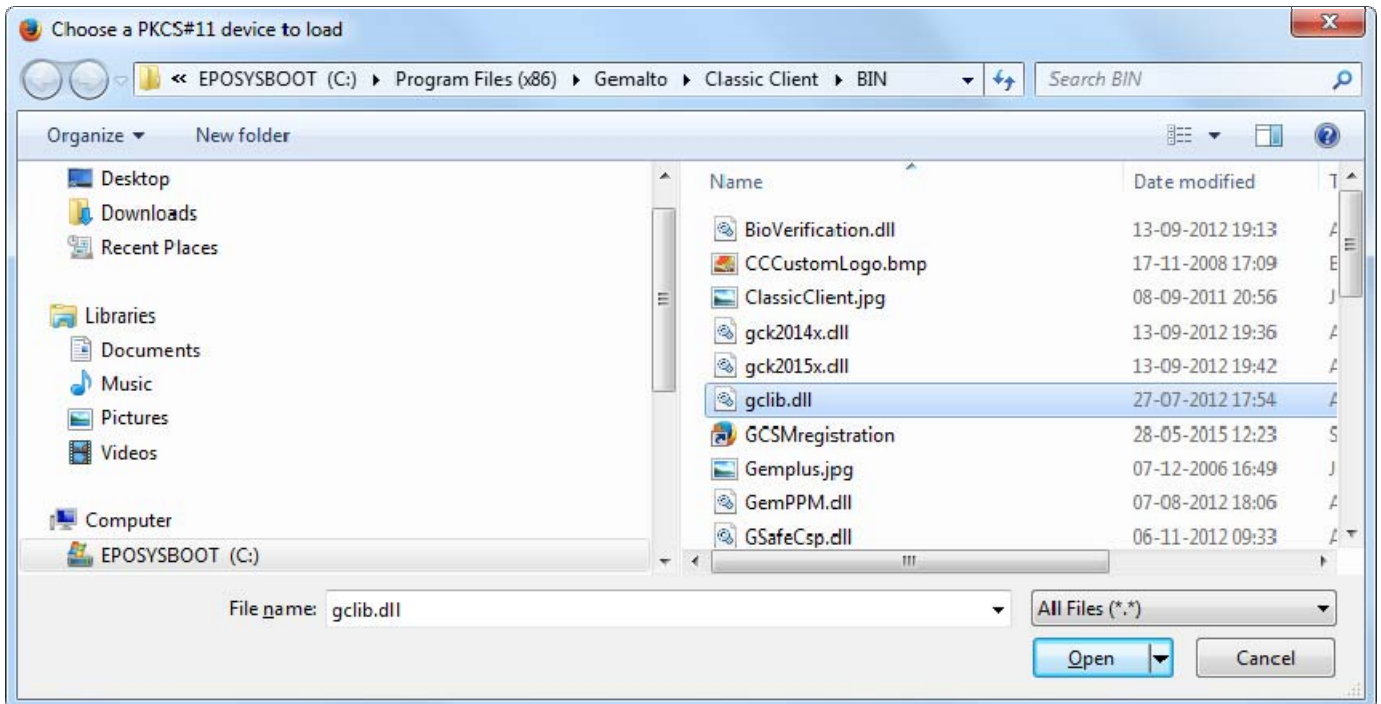
The Load PKCS#11 Device window opens as above.

6. Type Gemalto PKCS#11 Module as the Module Name

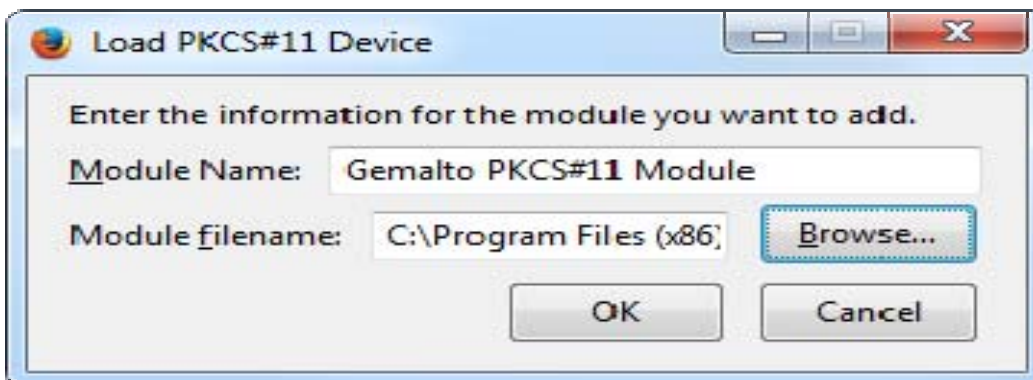


7. Click on browse to locate the driver file **gclib.dll**.

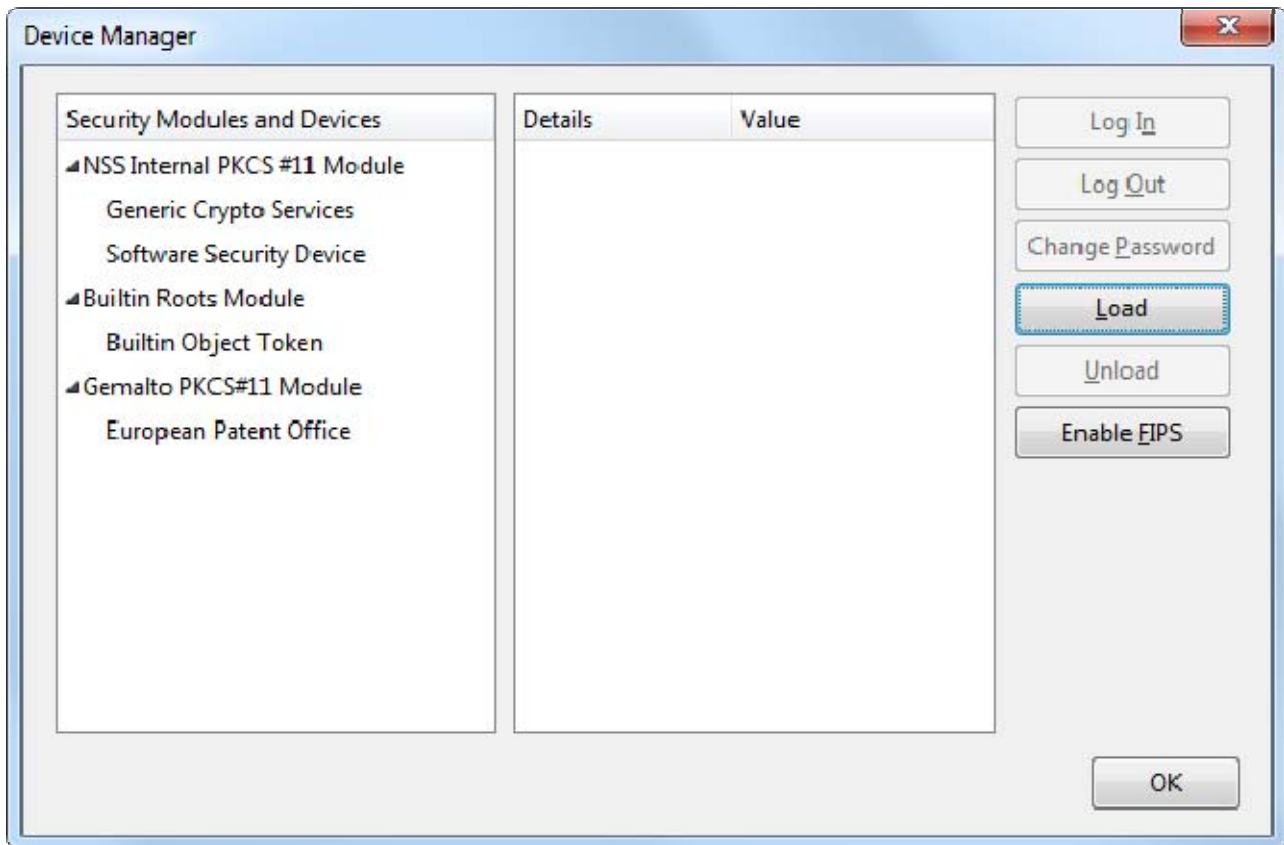
It will be in C: \Program Files\Gemalto\Classic Client\BIN folder for a 64 bit Firefox version
OR in C: \Program Files(x86)\Gemalto\Classic Client\BIN folder for a 32 bit Firefox version



8. Click on Open and once the Module filename appears, click on OK to acknowledge.



The Gemalto Classic Client is now set up and security certificates are registered.



9. Click on OK, to close the Device Manager window.