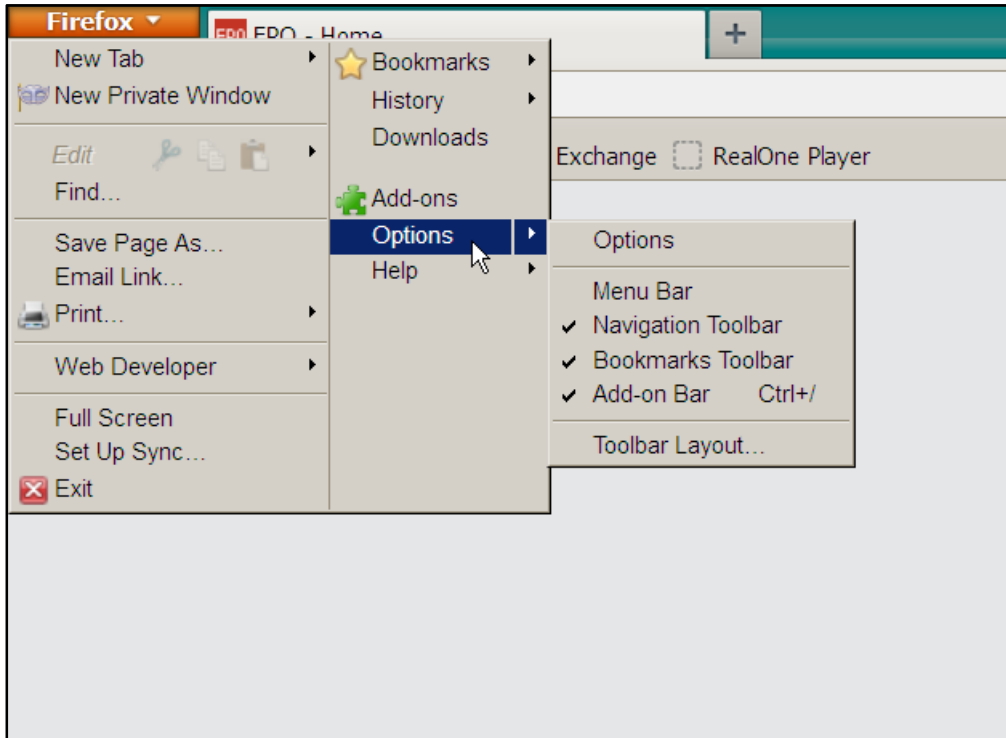


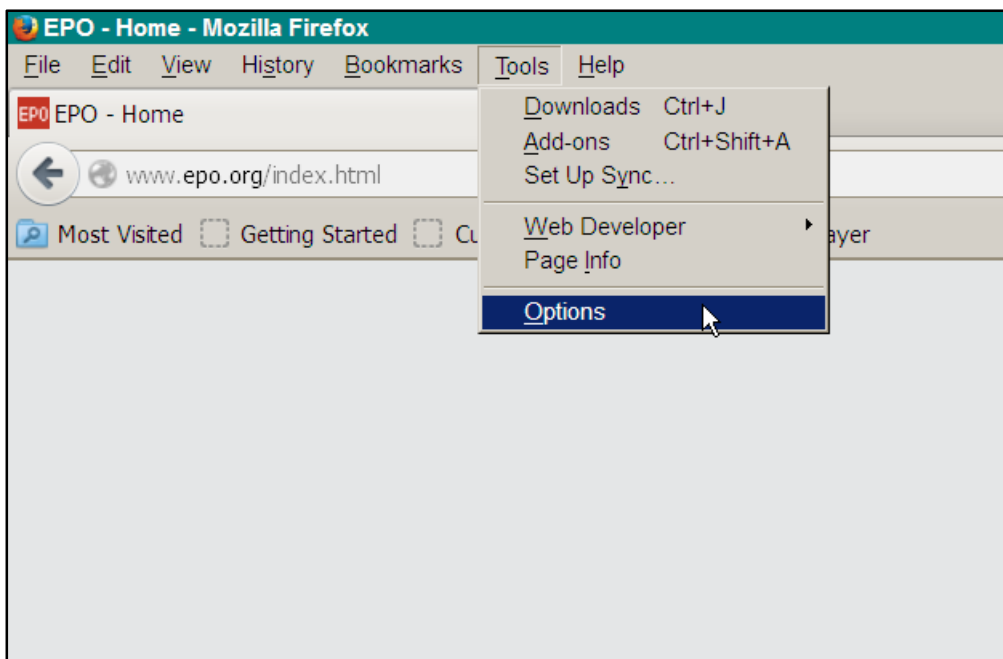
Setting up Gemalto Classic Client in Mozilla Firefox

1. Launch the Mozilla Firefox web browser.

If using the "default" layout, click **Firefox** and then **Options**.

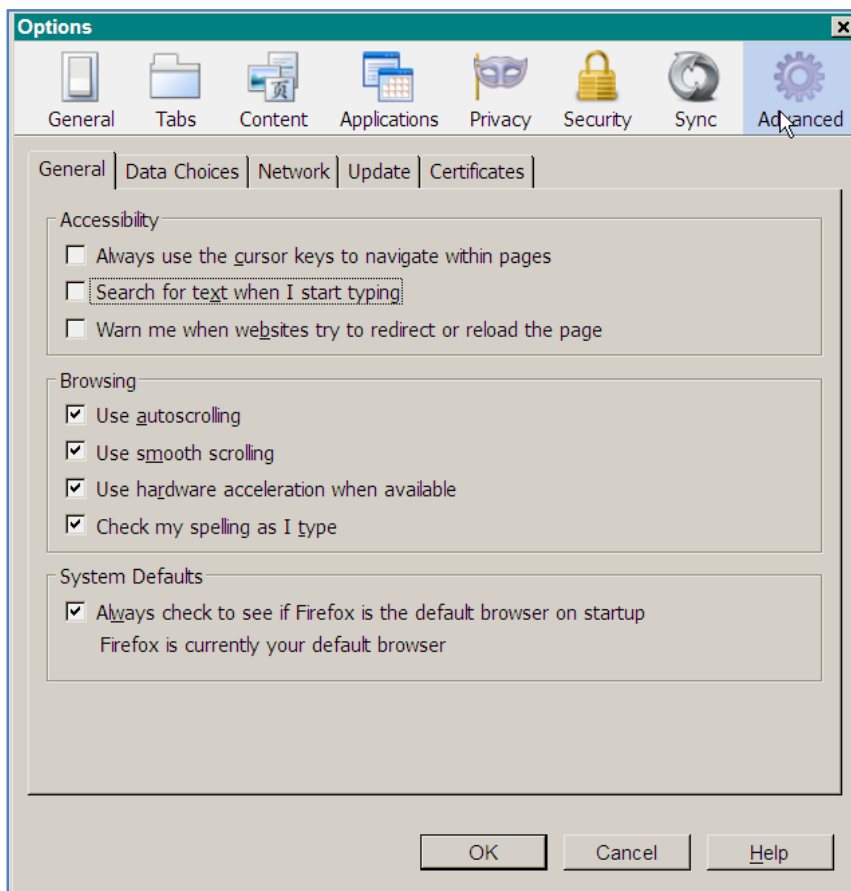


If using a "customised" layout (with the menu bar displayed), click **Tools** and then **Options**.

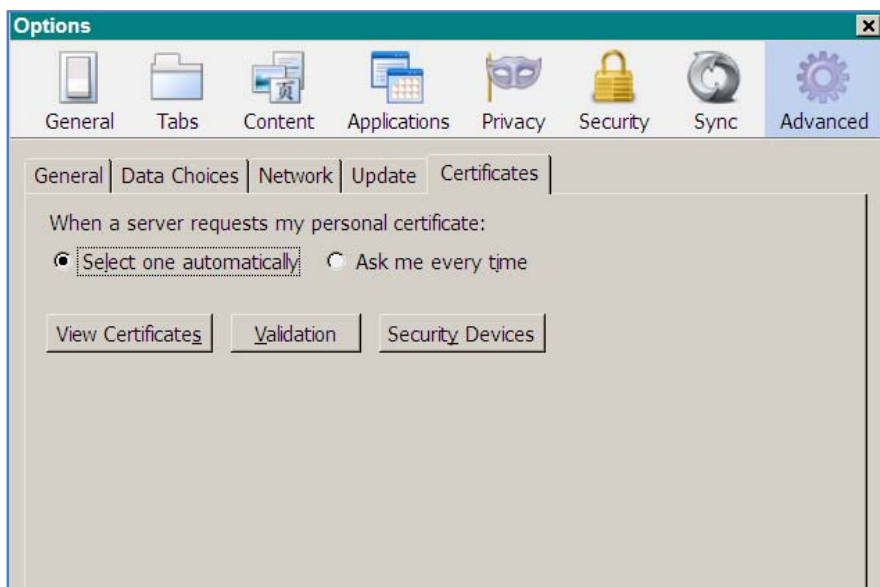


The **Options** window opens.

2. Click **Advanced** in the **Options** window.



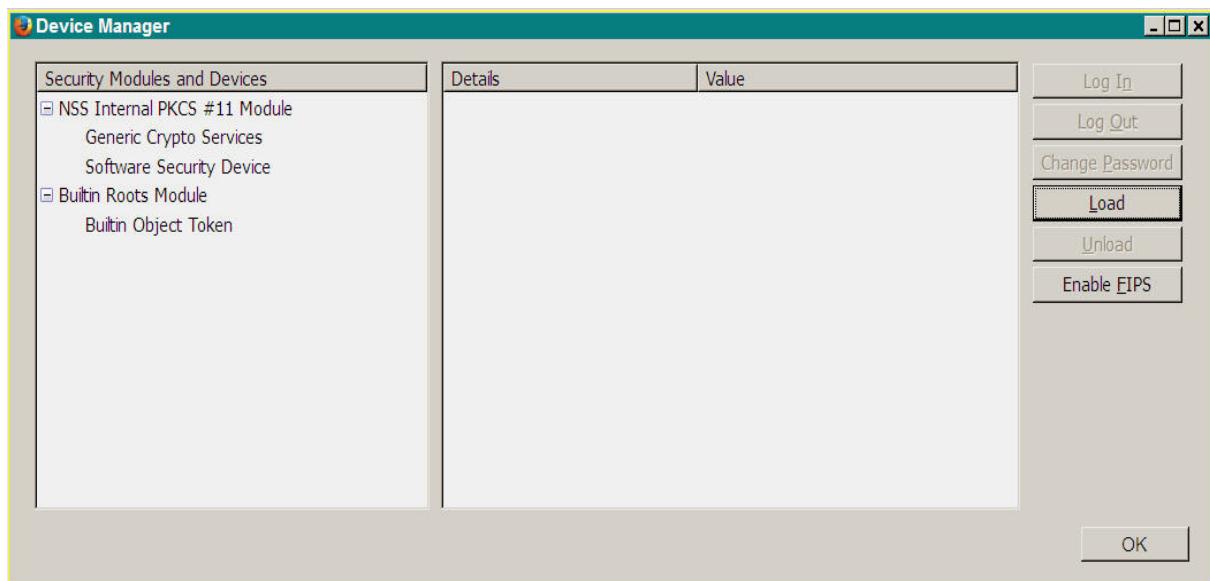
3. Select the **Certificates** tab and activate the option **Select one automatically**.



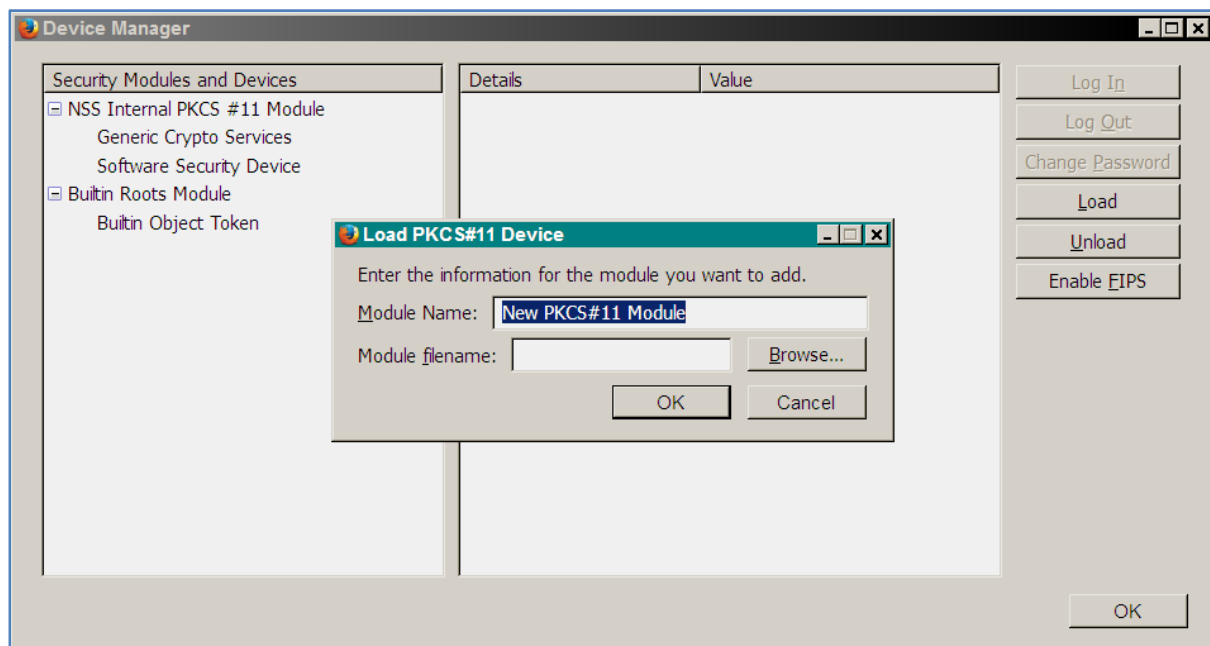
4. Click the **Security Devices** button.

The **Device Manager** window opens.

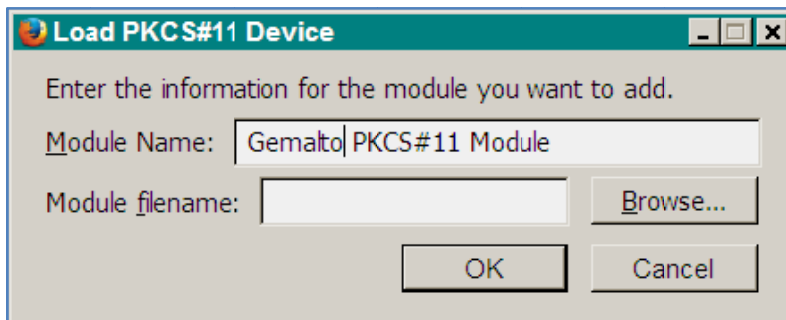
5. Click the **Load** button in the sidebar on the right of the **Device Manager** window.



The **Load PKCS#11 Device** window opens.



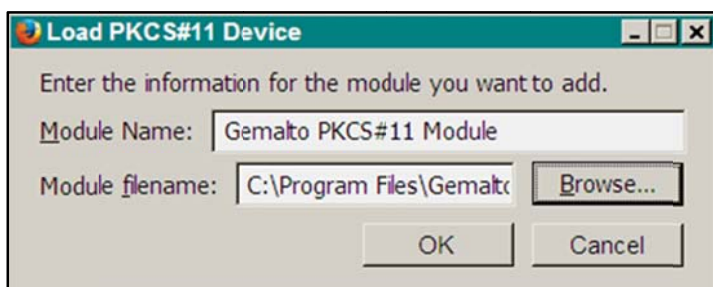
6. Type **Gemalto PKCS#11 Module** as the **module name**.



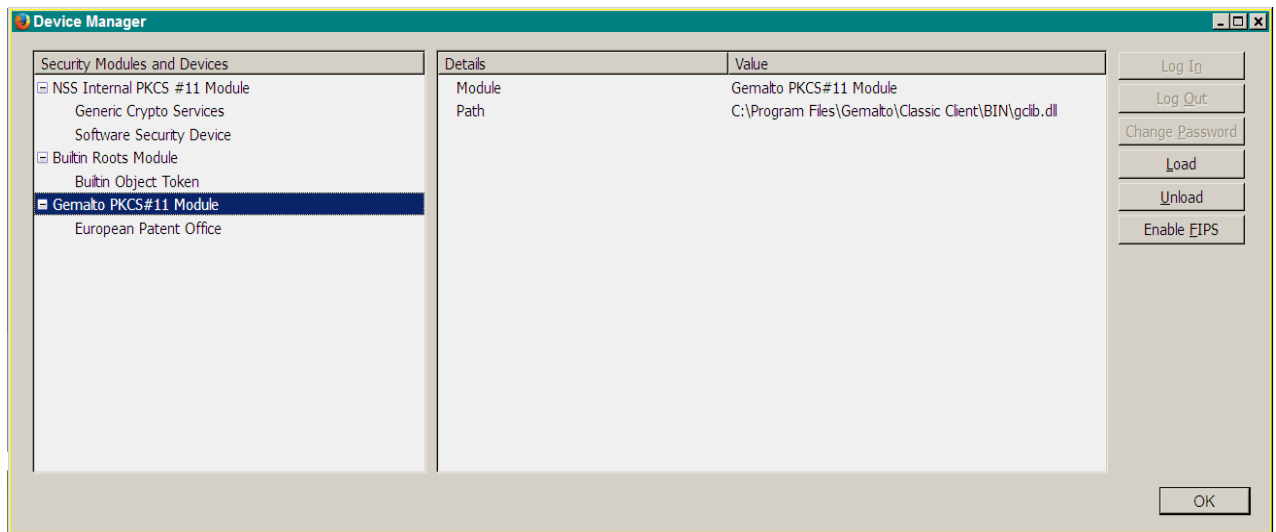
7. Click **Browse...** to locate the driver file **gclib.dll**.
(It will be under either C:\Program Files\Gemalto\Classic Client\BIN or C:\Program Files(x86)\Gemalto\Classic Client\BIN.)



8. Click **Open** to revert to the **Load PKCS#11 Device** window.



9. Click **OK** to confirm the load operation



Gemalto Classic Client is now set up, and security certificates are registered. Click **OK** to close the **Device Manager** window.