

BiSSAP Installation Guide

EPO BiSSAP Team

bissap@epo.org

Welcome to the Biological Sequence
Submission Application for Patents

BiSSAP



March 2011

ABSTRACT

Biological Sequence Submission Application for Patents, BiSSAP for short, is a newly developed system to generate and verify sequence listings. This document is an installation manual for this program.

History of changes

| Release | Date | Description | Author |
|---------|------------|-----------------|-------------|
| 1.0 | 30.03.2011 | Initial Release | Bissap Team |

Contents

| | | |
|----------|--|-----------|
| 1 | Licence information | 4 |
| 2 | Getting BiSSAP | 5 |
| 3 | MS Windows | 6 |
| 3.1 | Minimum requirements | 6 |
| 3.2 | Installing BiSSAP using an installer | 6 |
| 3.3 | Installing from the archive | 7 |
| 3.4 | Running BiSSAP | 8 |
| 3.5 | Uninstalling BiSSAP | 8 |
| 4 | Mac OS X | 10 |
| 4.1 | Requirements | 10 |
| 4.2 | Installing | 10 |
| 4.3 | Running BiSSAP | 11 |
| 4.4 | Uninstalling BiSSAP | 11 |

| | | |
|----------|---|-----------|
| 5 | Linux | 12 |
| 5.1 | Requirements | 12 |
| 5.2 | Installing | 12 |
| 5.3 | Running BiSSAP | 13 |
| 5.4 | Uninstalling BiSSAP | 13 |
| 6 | Notes | 14 |
| 7 | Further reading (internal help) | 15 |
| 8 | Troubleshooting | 16 |
| 8.1 | BiSSAP crashes during startup | 16 |
| 8.2 | Help is not accessible | 16 |

1 Licence information

BiSSAP is freeware. It is acceptable to use it for commercial and non-commercial purposes. This program is delivered on AS IS basis.

Installing and running BiSSAP means that you have read and accepted the following licence:

Download, installation and use of BiSSAP software is subject to the **Terms and conditions of use** for the European Patent Office website (see <http://www.epo.org/termsfuse.html>), and in particular section 8 (3) thereof which reads:

Any software made available for download on the Website is supplied “as is” without further warranties of any kind, either express or implied, including, but not limited to, the quality, performance, merchantability or fitness for a particular use or purpose. Without prejudice to section 8 (1) above, the EPO shall not be liable for any damages, including but not limited to direct, indirect, special, incidental, punitive, exemplary or consequential damages arising out of the use or the inability to use such software, even if the EPO is advised of the possibility of the respective damages. Specifically, the EPO is not responsible for any loss of profits or revenue, loss of the use of the computer program, loss of data, the cost of recovering programs or data, the substitute program and any claims by third parties caused by the use of such software.

The user shall acquire a non-exclusive licence only. The software may be stored on the hard disk of the user’s computer. It shall be prohibited to make any copy thereof with the exception of one copy for back-up purposes. The software shall not be disassembled, decompiled and/or modified except where this is allowed under mandatory rules of law. Should a user contravene any of the restrictions laid down above, the EPO shall be entitled to revoke the right to use the software with immediate effect. This shall be without prejudice to any further claims for damages on the part of the EPO.

2 Getting BiSSAP

BiSSAP is distributed on internet. The BiSSAP download site is located at:

<http://www.epo.org/bissap>

Currently, the following versions are distributed:

- MS Windows
- Mac OS X 64bit
- Mac OS X 32bit
- Linux

| Software | Size | Date | Download |
|------------------------------|---------|------------|--------------------------|
| Microsoft Windows XP/Vista/7 | 67.6 MB | 11-02-2011 | Download |
| Mac OS 32 Bit version | 61.6 MB | 11-02-2011 | Download |
| Mac OS 64 Bit version | 67.1 MB | 11-02-2011 | Download |
| Linux | 60.8 MB | 11-02-2011 | Download |

| Document | Size | Date | Download |
|--------------------|--------|------------|--------------------------|
| Installation guide | 0.9 MB | 28-06-2010 | Download |

Figure 1: Different versions of BiSSAP installation files.

Currently, all the offered versions require an i386-compatible processor. Should you require a version for an environment/operating system other than those supported at the moment, please contact BiSSAP team at:

bissap@epo.org

3 MS Windows

3.1 Minimum requirements

BiSSAP will work on any MS Windows system, which fulfills the following requirements:

- 1 GB RAM (2 GB recommended)
- 100 MB disk space for installation, with additional disk space for data (depending on the size of the data)
- screen resolution 1280x900 (recommended: greater than 1680x1200)
- Java 5 JRE (or newer) installed

3.2 Installing BiSSAP using an installer

1. Open the internet browser and navigate to the BiSSAP web site:

<http://www.epo.org/bissap>

2. Download the MS Windows version of the installer (file `bissap_setup.msi`).



Figure 2: BiSSAP Setup: Choosing BiSSAP location

3. Double-click the `bissap_setup.msi`. Follow the dialogs.
4. Choose the installation directory.
 - By default, the installer will install the program in the `Program Files` directory on your main hard drive. If you do not have local admin rights on you computer, you must choose a different location.
 - The workspace directory (in which BiSSAP keeps its data) will be located there as well, so it should be a place with enough space for your data. You will not be able to load sequences larger then the available space.

5. The installation program does not alter the Windows registry.
6. The installation program creates shortcuts in the Start -> Programs menu, and on the Desktop.

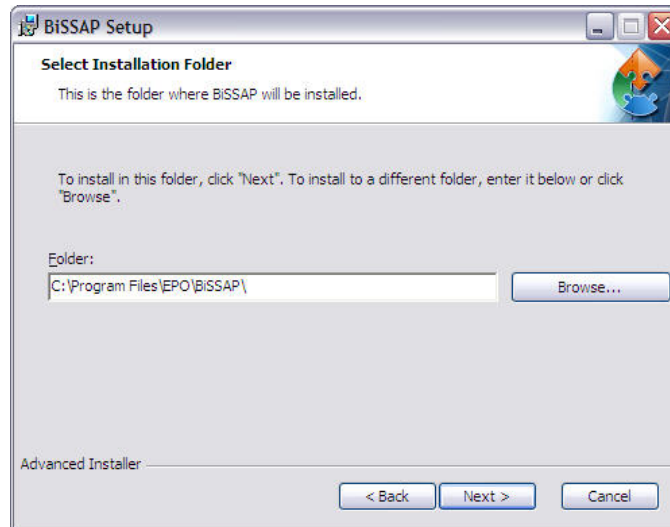


Figure 3: BiSSAP Setup: choosing BiSSAP location

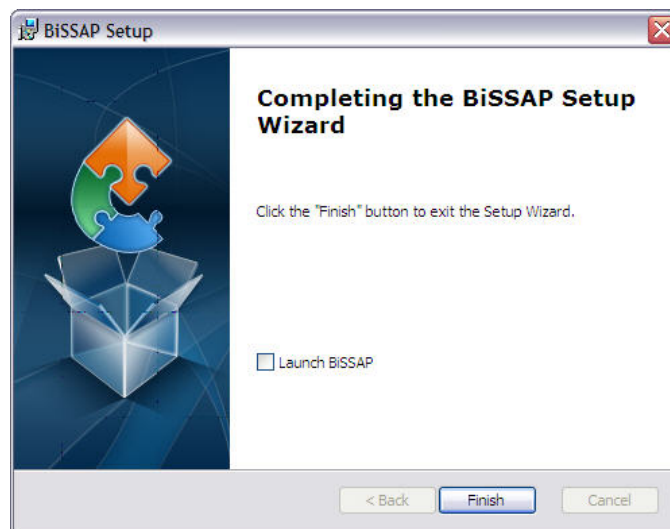


Figure 4: BiSSAP Setup: finished

Note: No administration rights are necessary to install BiSSAP.

3.3 Installing from the archive

There is an alternative version of BiSSAP distribution, which comes without an installation program.

1. Open an internet browser and navigate to the BiSSAP website:

<http://www.epo.org/bissap>

2. Download the MS Windows version of the archive (file `bissap.zip`).
3. Unpack the archive into a directory of your choice. The workspace directory (in which BiSSAP keeps its data) will be located there as well, so it should be a place where there is enough space for your data. You will not be able to load sequences larger than the available space.
4. If you want, create a shortcut to the `bissap.exe` on the Desktop.

3.4 Running BiSSAP

Note: Before starting BiSSAP make sure that no other copy of BiSSAP is running. To start BiSSAP do one of the following:

- Click the BiSSAP shortcut in the Start->Programs menu.
- Double-click the `bissap.exe` in the BiSSAP directory.
- Double-click the BiSSAP shortcut on the Desktop.

While BiSSAP is starting, you should see the BiSSAP splash screen (Figure 5).



Figure 5: BiSSAP Splash Screen

When you start BiSSAP for the first time, you should see a welcome screen (Figure 10). The welcome screen is visible at first run only, but you can open it any time from the main menu `Help` → `Intro`. The welcome screen provides you with various links, which you can click to access some documentation. To start working, close the welcome screen by clicking `X` on the welcome screen tab.

3.5 Uninstalling BiSSAP

If BiSSAP is installed using the installer:

1. Close BiSSAP if it is open.
2. Navigate to the BiSSAP installation directory, and click the `uninstall.exe` program.



Figure 6: Welcome screen in MS Windows

3. Follow the dialogs.
4. The uninstaller should remove all the created files. Please make sure, that the correct option is selected in the program. If the files from the previous version are not deleted, a new version of BiSSAP can crash.

If BiSSAP is installed from the .zip archive:

1. Close BiSSAP if it is open.
2. Delete the BiSSAP directory.

4 Mac OS X

4.1 Requirements

BiSSAP will work on Mac OS X 10.4.11, 10.5.8 or newer, 10.6.1 or newer, which fulfills the following requirements:

- 1 GB RAM (2 GB recommended)
- 100 MB disk space for installation, with additional disk space for data (depending on the size of the data)
- screen resolution 1280x900 (recommended: 1680x1200 or higher)
- Java 5 JRE (or newer) installed

The following versions are available, each of which has some additional requirements:

- `bissap_setup.dmg` – requires Intel processor, Mac OS X 10.5.8 or newer
- `bissap_setup_64.dmg` – requires 64-bit Intel processor, Mac OS X 10.6.1 or newer.

All the versions are functionally equivalent.

4.2 Installing

1. Open the internet browser and navigate to the BiSSAP website:
`http://www.epo.org/bissap`
2. Download the appropriate Mac OS X version of the installer (independent of the version you downloaded, we will call the file `bissap_setup.pkg` in this description) and save it somewhere.
3. Mount/open downloaded archive (double-click `.dmg` file).
4. Double-click on the `bissap_setup.pkg` (see [Figure 7](#)). Follow the dialogs.
5. Please choose the installation directory (see [Figure 8](#)).
 - The workspace directory (in which BiSSAP keeps its data) will be located there as well, so it should be a place (disk) where there is enough space for your data. You will not be able to load sequences larger than the available space.
6. The installation program does not alter the system settings.

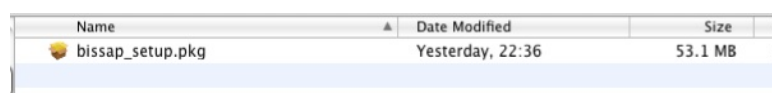


Figure 7: Clicking on the package file starts the installer



Figure 8: The Mac installer: Choosing of the location

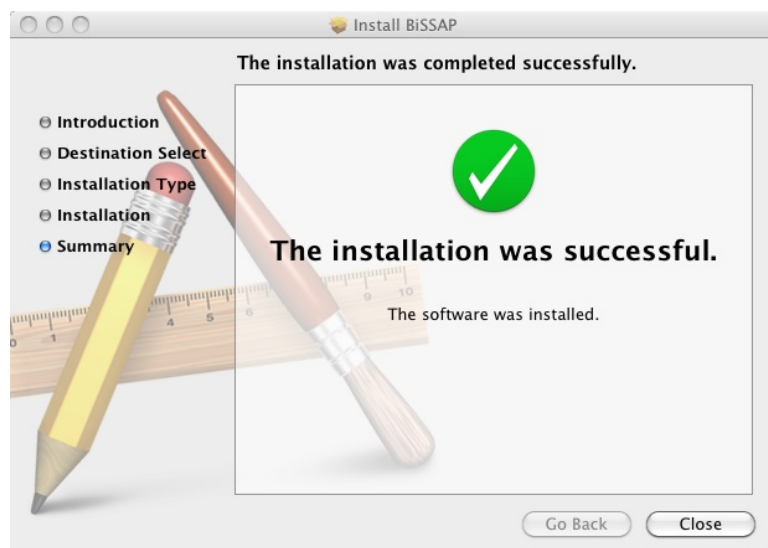


Figure 9: The Mac installer: Installation successful

4.3 Running BiSSAP

Note: Before starting BiSSAP make sure that no other copy of BiSSAP is running. To start BiSSAP do one of the following:

- Double-click the BiSSAP icon in the Applications folder (see [Figure 11](#)).
- Double-click the `bissap` file in the BiSSAP directory.

4.4 Uninstalling BiSSAP

Please remove the BiSSAP folder from the Applications folder.



Figure 10: Welcome Screen on Mac OS X

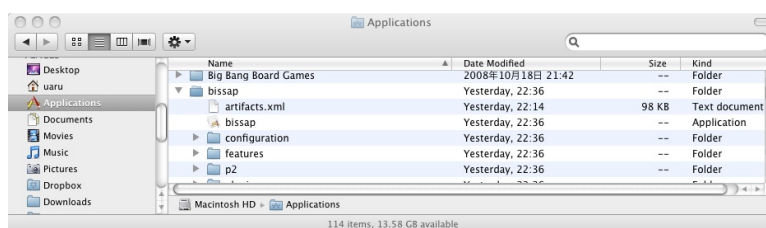


Figure 11: BiSSAP subdirectory in the Applications folder

5 Linux

5.1 Requirements

BiSSAP will work on a Linux system which fulfils the following requirements:

- 1 GB RAM (2 GB recommended)
- 100 MB disk space for installation, with additional disk space for data (depending on the size of the data)
- screen resolution 1280x900 (recommended: 1680x1200 or higher)
- Java 5 JRE (or newer) installed
- GTK libraries

The currently distributed Linux version of BiSSAP requires an i386 compatible processor.

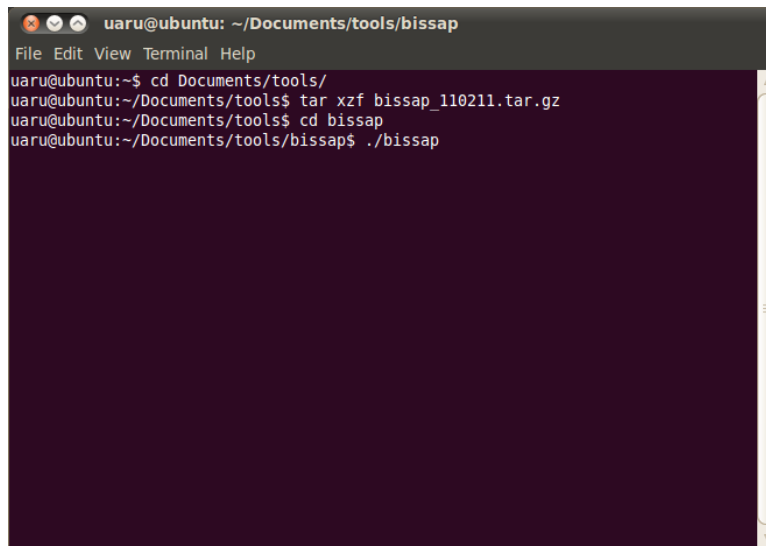
5.2 Installing

1. Open an internet browser and navigate to the BiSSAP web site:

`http://www.epo.org/bissap`

2. Please download the Linux version of the archive. The archive name is in the form `bissap_xxxxx.tar.gz` – regardless of the exact name of the archive, we will call it `bissap.tar.gz` in this document.

3. Unpack the archive into the working directory, referred to as `bissap_directory` from now on.
 - The workspace directory (in which BiSSAP keeps its data) will be located there as well, so it should be a place, where there is enough room for data. You will not be able to load sequences larger then the available space.
4. No changes to the system e.

A terminal window titled 'uaru@ubuntu: ~/Documents/tools/bissap'. The terminal shows the following commands and their outputs:

```
uaru@ubuntu:~$ cd Documents/tools/  
uaru@ubuntu:~/Documents/tools$ tar xzf bissap_110211.tar.gz  
uaru@ubuntu:~/Documents/tools$ cd bissap  
uaru@ubuntu:~/Documents/tools/bissap$ ./bissap
```

Figure 12: BiSSAP in Linux: unpacking the archive and starting BiSSAP

5.3 Running BiSSAP

Note: Before starting BiSSAP make sure that another copy of BiSSAP is not running.
To start BiSSAP:

- in shell (command line):
 1. go to the `bissap_directory`
 2. run `bissap`

5.4 Uninstalling BiSSAP

1. Close BiSSAP if it is open.
2. Remove the `bissap_directory`.

6 Notes

If you have problems installing or running BiSSAP, or a version for your system does not exist, please do not hesitate to send an email to the BiSSAP team at bissap@epo.org.

7 Further reading (internal help)

BiSSAP has an internal help system, with a built-in search feature. Once you have BiSSAP installed, you can access this system by choosing `Help` → `Help Contents`. This opens a window with access to the entire help system. In some systems the help is displayed in the external browser.

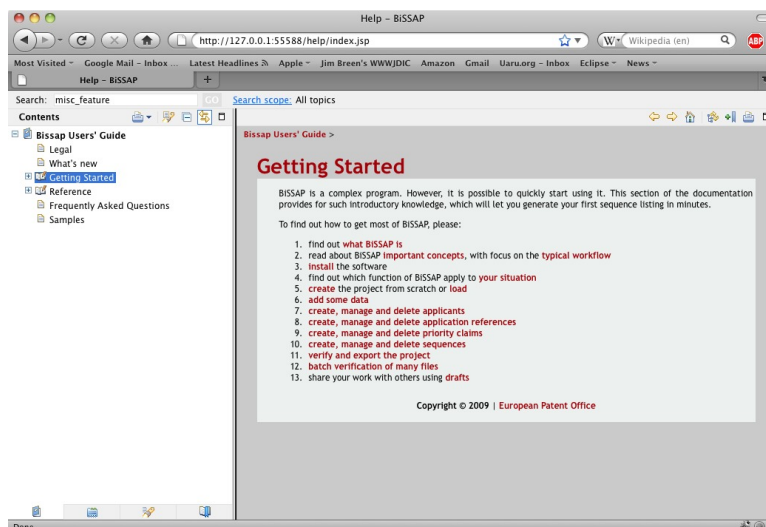


Figure 13: Help displayed in Mozilla Firefox on Mac OS X

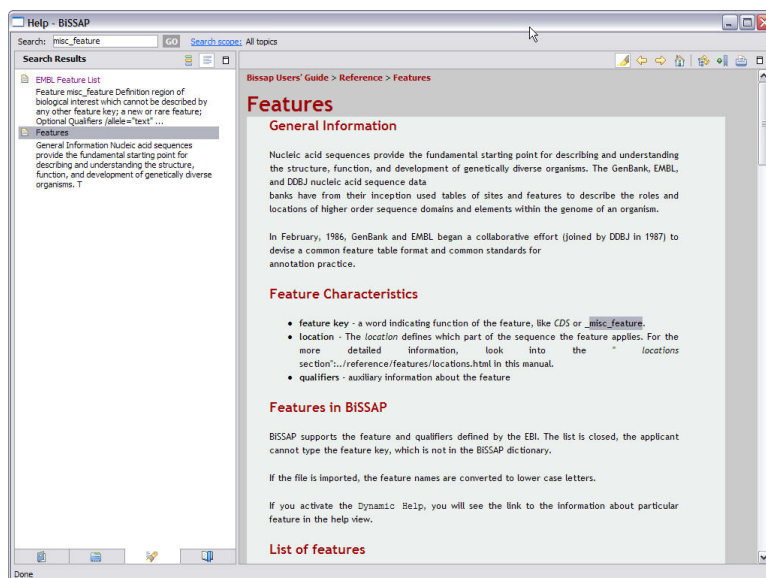


Figure 14: Help displayed in MS Windows (shown: the full text search feature in the BiSSAP help)

You can also choose `Help` → `Dynamic Help` to open a window with dynamic help. When you click elements in BiSSAP, this window will load links to appropriate parts of the help documents.

If you choose `Help` → `Search`, the window which opens is the interface to the internal BiSSAP search system.

8 Troubleshooting

8.1 BiSSAP crashes during startup

- Check whether another copy of BiSSAP is running (at any time you can run only one instance of BiSSAP on a machine).
- Check that the old copy was entirely deleted. When changing BiSSAP versions, the old workspace files **MUST** be deleted. Because the database structure sometimes changes to reflect new biological verification rules, the new BiSSAP may not be able to handle the old BiSSAP data with the result that the application crashes.

Remember that the only **GUARANTEED** way of moving data to the next version is by using the official WIPO standard files, i.e. `ST.25`.

8.2 Help is not accessible

BiSSAP features a powerful help system, with context help and free-text searching. When you invoke Help via the `Help Contents` menu, it opens in a special Internet Explorer module (in MS Windows) or in the default web browser (other systems). Sometimes instead of help, an error is reported.

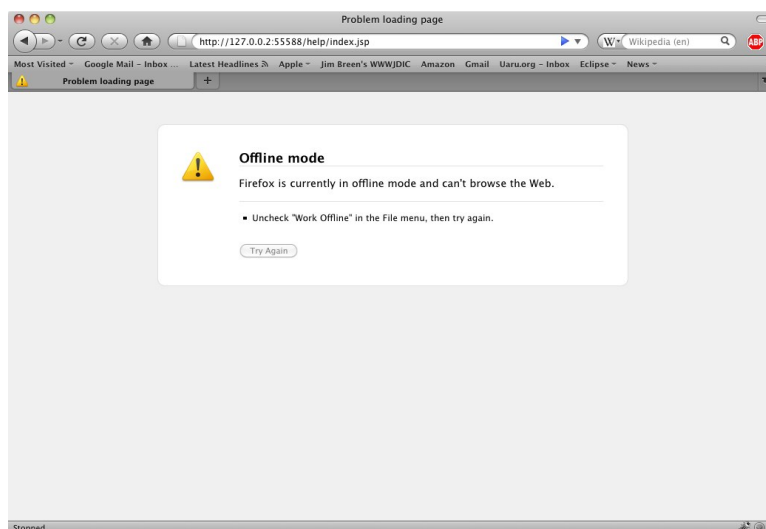


Figure 15: Help not available on a Mac in Mozilla Firefox

If you see such a message, it is likely that your internet settings prevented you from accessing the BiSSAP help system. This happens very rarely, but if it does:

1. Check whether your browser has `Work Offline` selected. If it does, please uncheck it.
2. Check whether you are using a proxy. If so, make sure the so-called `localhost` is on the list of exceptions. This is system-dependent, so it is not possible to handle all possible cases in this short manual. If the advice given here is insufficient, contact the IT department in your company if possible.

- For Firefox (on Mac OS X, Linux)
 - a) Open Preferences
- For Internet Explorer
 - a) Open Tools → Internet Options.
 - b) Choose Connections tab, and then click the LAN Settings button. Make sure that if the Use a proxy server . . . box is checked, the box Bypass proxy server for local addressees is checked as well.

You can also contact your local administrator.

If you are unable to configure your network settings properly, and it is not possible to get outside help, you can still access the help system. Start BiSSAP. Choose Help → Search. A window inside BiSSAP opens. If you click the Contents button in the left lower part of the window, it will display the table of contents of the BiSSAP help, from which you can navigate to the section you want to see.